

Place your mouse over the yellow folder to view a description of the reports

Click on the "My Area" Icon, then click "My Preferences"

**ELA Grade 3-8**

| Name  |
|---|
| 1. Group/Sub-group (Demographic) Analysis             |
| 2. Building Benchmark (Curriculum) Analysis           |
| 3. Student Benchmark (Strength and Weakness) Analysis |
| 4. Error/Distracter (Assessment) Analysis             |
| 6. Data Download                                      |
| Preliminary Reports                                   |

**Math Grade 3-8**

| Name  |
|---|
| 1. Group/Sub-group (Demographic) Analysis             |
| 2. Building Benchmark (Curriculum) Analysis           |
| 3. Student Benchmark (Strength and Weakness) Analysis |
| 4. Error/Distracter (Assessment) Analysis             |
| 6. Data Download                                      |
| Preliminary Reports                                   |

**Science Grade 4 and 8**

| Name                                      |
|---|
| 1. Group/Sub-group (Demographic) Analysis |
| 4. Error/Distracter (Assessment) Analysis |
| 6. Data Download                          |

**Social Studies Grade 5 and 8**

| Name                                      |
|---|
| 1. Group/Sub-group (Demographic) Analysis |
| 4. Error/Distracter (Assessment) Analysis |
| 6. Data Download                          |

**NYSESLAT**

| Name                         |
|------------------------------|
| 1. Individual Session Scores |
| 6. Data Download             |

**Regents**

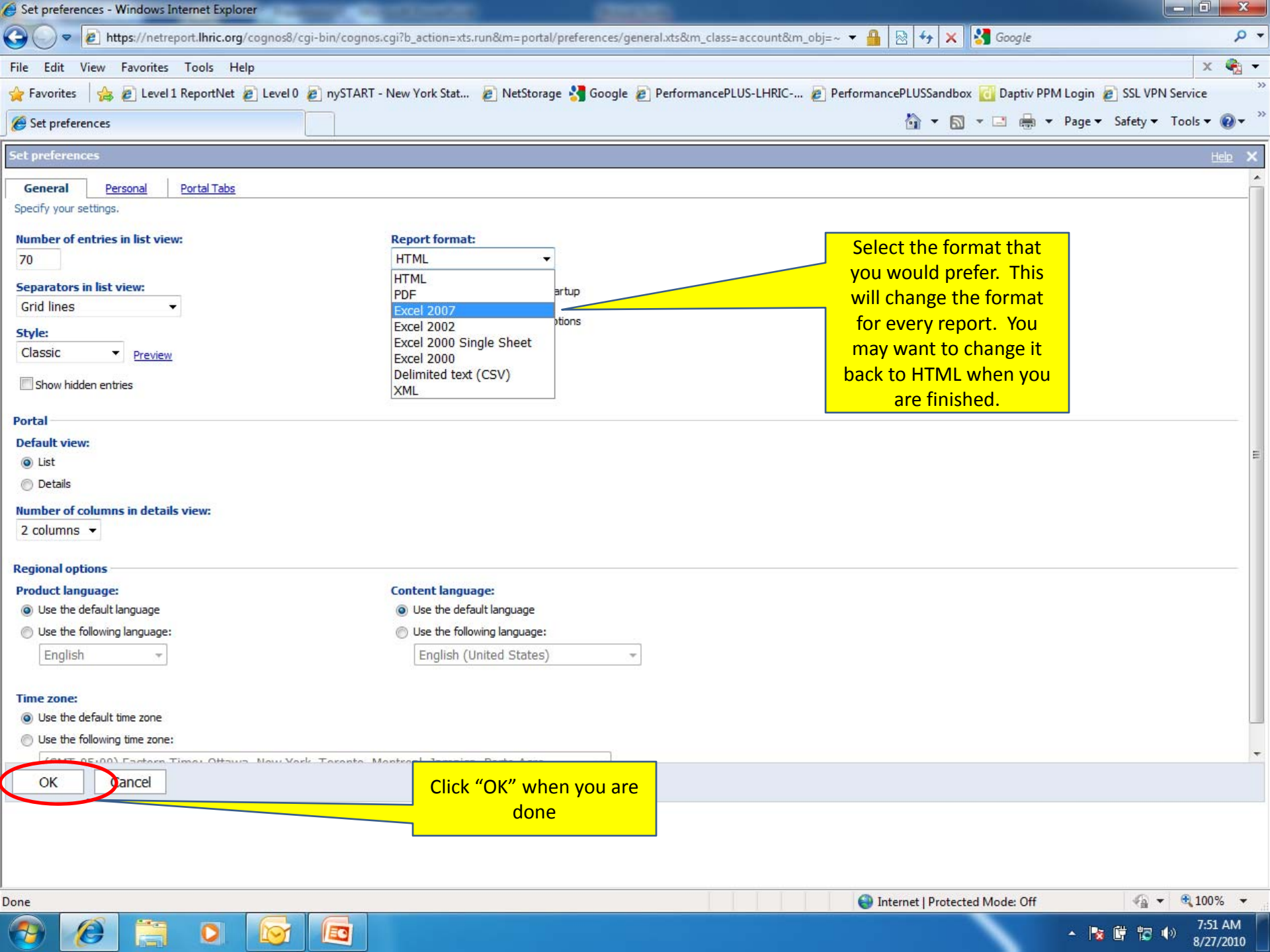
| Name        |
|-------------|
| No entries. |

**NYSAA**

| Name             |
|------------------|
| 6. Data Download |

**Multi-Subject**

| Name        |
|-------------|
| No entries. |



Select the format that you would prefer. This will change the format for every report. You may want to change it back to HTML when you are finished.

Click "OK" when you are done

**General** | Personal | Portal Tabs

Specify your settings.

**Number of entries in list view:**

70

**Separators in list view:**

Grid lines

**Style:**

Classic [Preview](#)

Show hidden entries

**Report format:**

- HTML
- HTML
- PDF
- Excel 2007**
- Excel 2002
- Excel 2000 Single Sheet
- Excel 2000
- Delimited text (CSV)
- XML

**Portal**

**Default view:**

- List
- Details

**Number of columns in details view:**

2 columns

**Regional options**

**Product language:**

- Use the default language
- Use the following language: English

**Content language:**

- Use the default language
- Use the following language: English (United States)

**Time zone:**

- Use the default time zone
- Use the following time zone: (GMT-05:00) Eastern Time (Ottawa, New York, Toronto, Montreal, ...)

**OK** **Cancel**