



Using the Benchmark Reports with Data Mentor

Modified 8-30-09

Lower Hudson Regional Information Center,
2009

2008-09 School Year - IBM Cognos Connection - Windows Internet Explorer

http://166.109.4.114/cognos8/cgi-bin/cognos.cgi?b_action=xts.run&m=portal/cc.xts&m_tab=IEF8DE78FDE524D51

IBM Cognos Connection

2008-09 School Year | 2007-08 School Year | Archive | Verification Reports | EETT | Documentation | My Folders

Place your mouse over the yellow folder to view a description of the reports

ELA Grade 3-8

- 1. Group/Sub-group (Demographic) Analysis
- 2. Building Benchmark (Curriculum) Analysis
- 3. Student Benchmark (Strength and Weakness) Analysis
- 4. Error/Distracter (Assessment) Analysis
- 5. Change Over Time (Trend) Analysis
- 6. Building Item Analysis by Regional Benchmark

Math Grade 3-8

- 1. Group/Sub-group (Demographic) Analysis
- 2. Building Benchmark (Curriculum) Analysis
- 3. Student Benchmark (Strength and Weakness) Analysis
- 4. Error/Distracter (Assessment) Analysis
- 5. Change Over Time (Trend) Analysis

Science Grade 4 and 8

- 1. Group/Sub-group (Demographic) Analysis
- 2. Building Benchmark (Curriculum) Analysis
- 3. Student Benchmark (Strength and Weakness) Analysis
- 4. Error/Distracter (Assessment) Analysis

Social Studies Grade 5 and 8

- 1. Group/Sub-group (Demographic) Analysis
- 2. Building Benchmark (Curriculum) Analysis
- 3. Student Benchmark (Strength and Weakness) Analysis
- 4. Error/Distracter (Assessment) Analysis

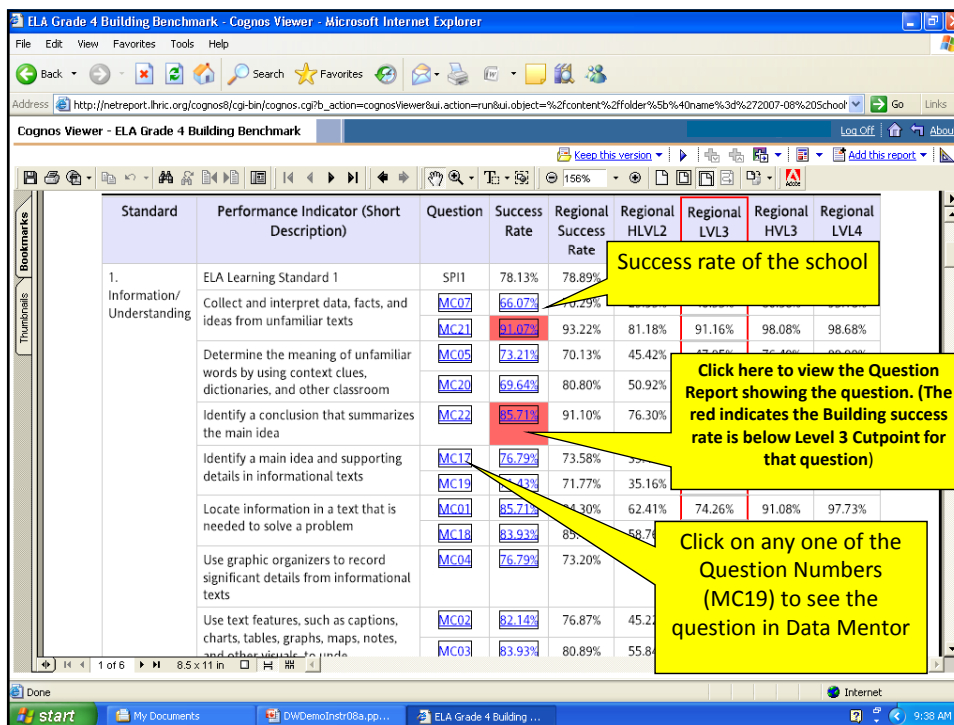
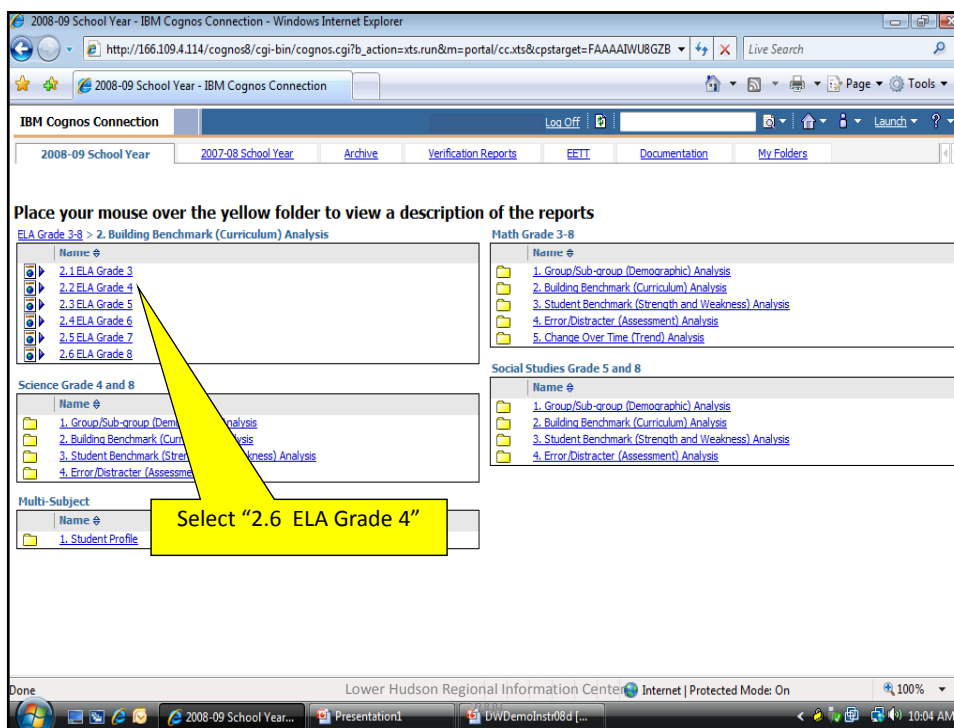
Multi-Subject

- 1. Student Profile

In the "ELA Grade 3-8" Section, select "2. Building Benchmark (Curriculum) Analysis"

Done Lower Hudson Regional Information Center | Internet | Protected Mode: On 100%

2008-09 School Year... Presentation1 DWDemoInstr08d [...]



Question Details
 ELA2005 >> Reading - Elementary level
Performance Indicator: 1RE
 Identify a main idea and supporting details in informational texts

[View Related Questions](#)

From NYSED Assessment: [Grade 4 ELA](#)

Resource: [Why Do We Need Sleep](#)

17. 1RE
 What is this passage **mostly** about?

- A. how the brain sleeps
- B. how much sleep you need
- ★ C. how sleep affects your body
- D. how many ways to go to sleep

Callouts:
 - Yellow box: "Click here to view additional questions" pointing to "View Related Questions".
 - Yellow box: "Here's the question" pointing to the question text.

Related Questions - Student View
 ELA2005 >> Reading - Elementary level
Performance Indicator: 1RE
 Identify a main idea and supporting details in informational texts

[Show Teacher View](#) | [Create PDF of this view](#)

Click the Show Teacher/Student link to show/hide current answers and question details. Click the Create PDF of this view link to open a PDF version of this page. Then click on the links in each question to print the materials. Due to the amount of material in each assessment, please allow a few minutes for the PDF version to be generated.

Directions: Here is a passage from a book about sleep. Read the passage. Then answer questions 17 through 23.

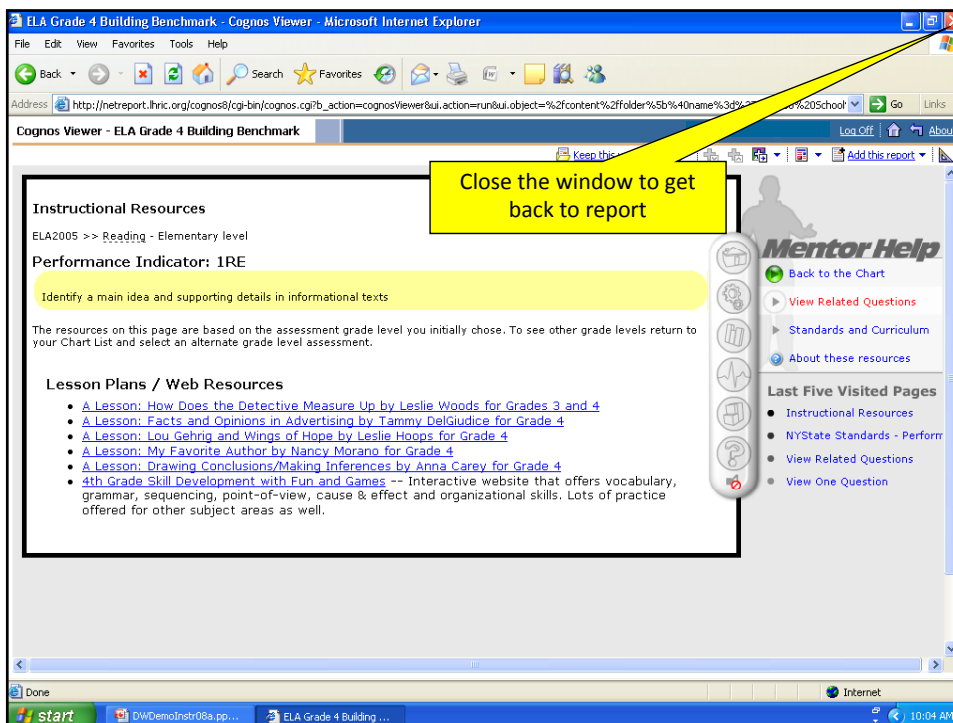
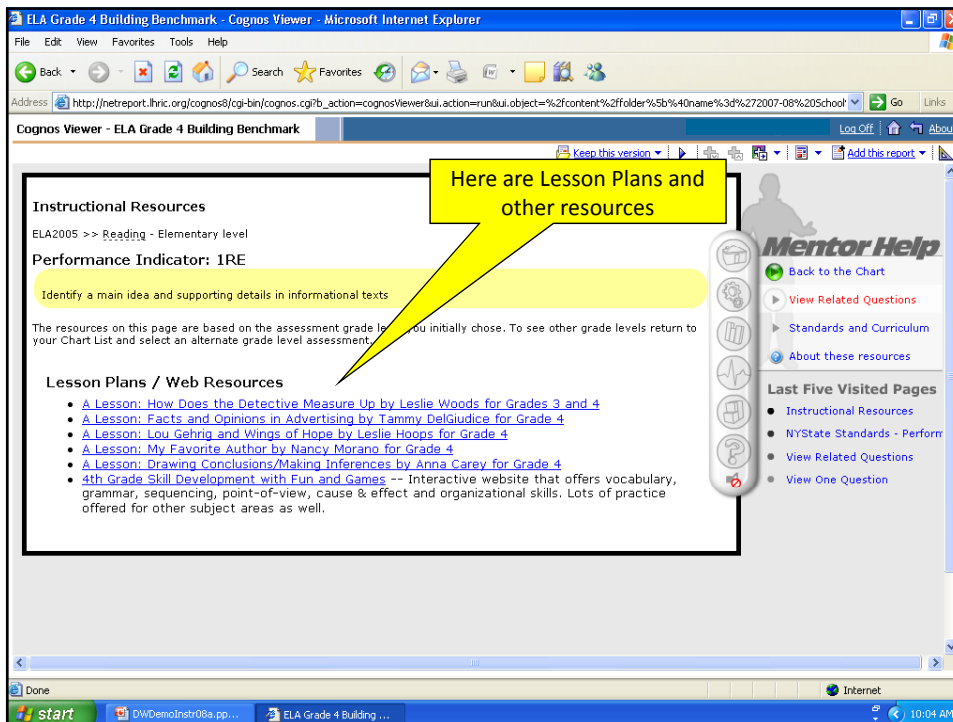
Question: 17 From Assessment ELA 4 Jan 2008

Resource: [Why Do We Need Sleep](#)

What is this passage **mostly** about?

- A. how the brain sleeps
- B. how much sleep you need
- C. how sleep affects your body
- D. how many ways to go to sleep

Callouts:
 - Yellow box: "Click 'Show teacher view'" pointing to "Show Teacher View".
 - Yellow box: "Click here to view reading passage" pointing to the directions.
 - Yellow box: "Here are the additional questions (scroll down for more)" pointing to the question options.



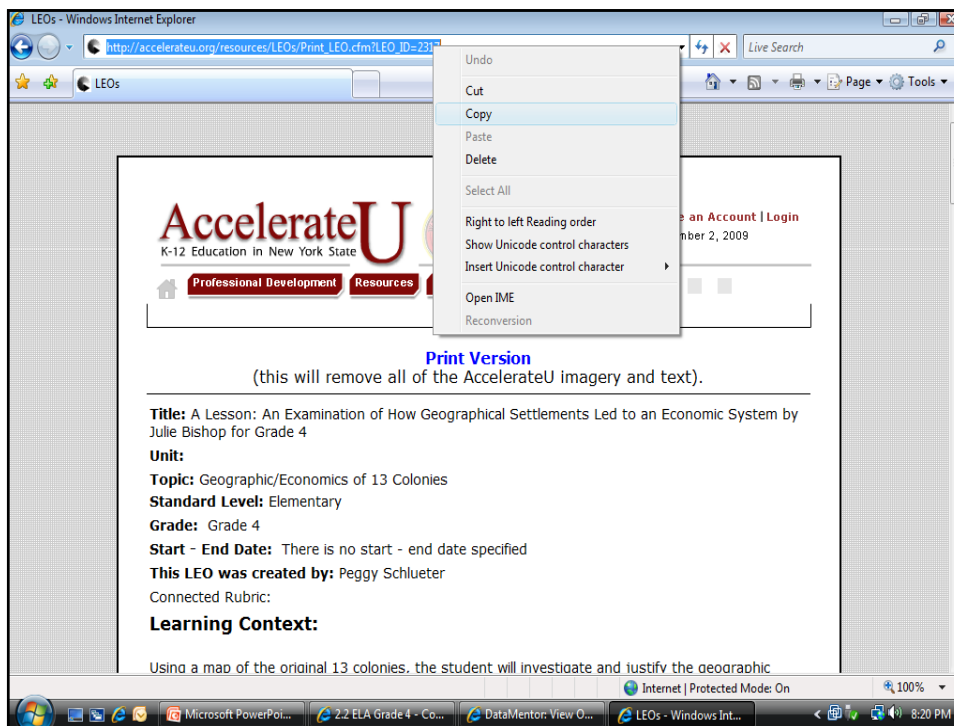
I found a good web resource. How can I save it?

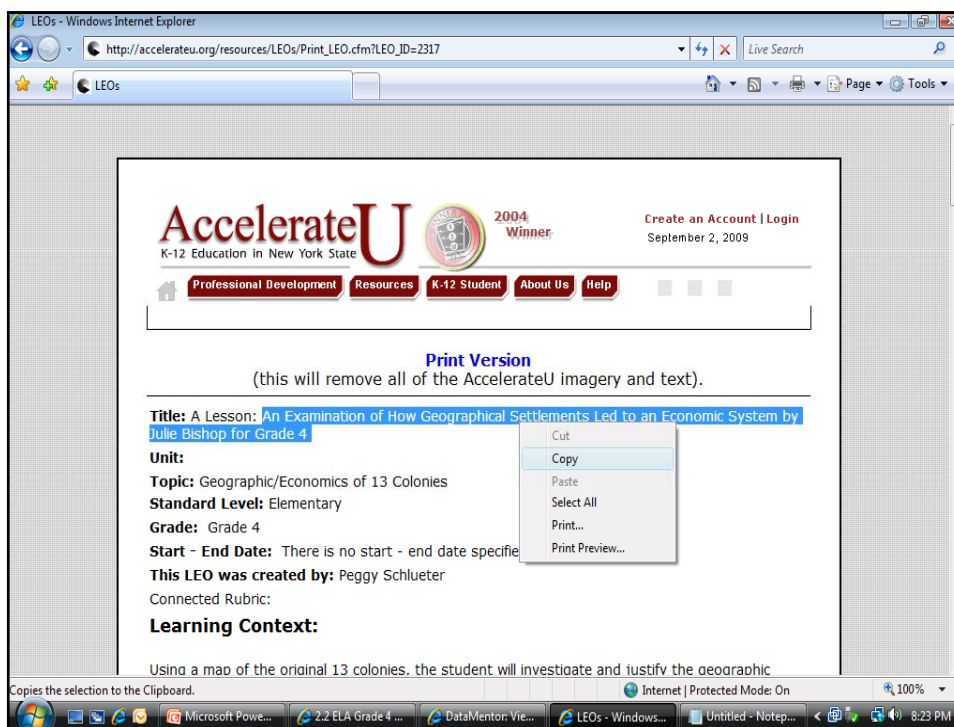
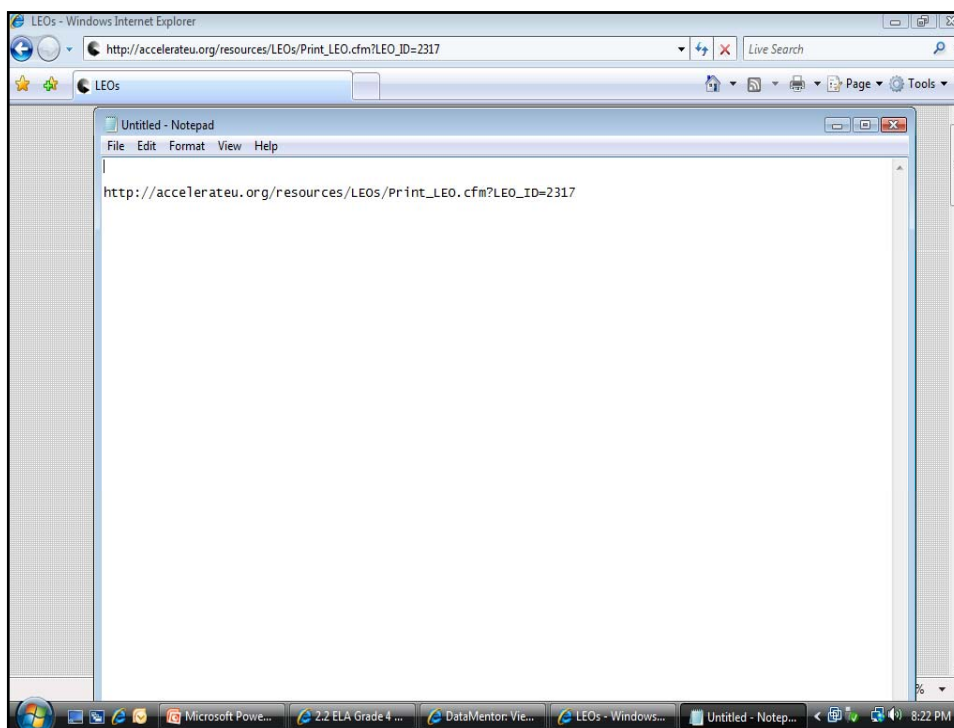
Lower Hudson Regional Information Center,
2009

The screenshot shows a Windows Internet Explorer browser window displaying the DataMentor website. The address bar shows the URL: <http://www.datamentor.org/index.cfm?event=showResources&assessmentID=808&chartType=Midrange&select>. The page content includes:

- Instructional Resources**
- ELA2005 >> Reading
- Performance Indicator: 4RS1K**
- Collect and interpret data, facts, and ideas from unfamiliar texts
- The resources on this page are based on the assessment grade level you initially chose. To see other grade levels return to your Chart List and select an alternate grade level assessment.
- Lesson Plans / Web Resources**
- [A Lesson: An Examination of How Geographical Settlements Led to an Economic System by Julie Bishop for Grade 4](#)
 - [A Lesson: Black History Month Biographies by Harold Christie for Grade 4](#)
 - [A Lesson: Splash into an Aquarium \(research\) by Patti Zangle for Grade 4](#)
 - [A Lesson: Biography Day by Chris Greco for Grade 4](#)
 - [A Lesson: My State Notebook by Brendalee K. Ashby for Grades 3 and 4](#)

On the right side, there is a vertical sidebar with a 'Mentor Help' logo and several navigation links: 'Back to the Chart', 'View Related Questions', 'Standards and Curriculum', and 'About these resources'. Below these links is a 'Last Five Visited Pages' section listing 'Instructional Resources', 'NYState Standards - Perform', and 'View One Question'. At the bottom of the page, there are links for 'Home | Help | Sitemap | Contact Us' and a copyright notice '© 2008 EduTech'. The browser's taskbar at the bottom shows several open applications, including Microsoft PowerPoint, 2.2 ELA Grade 4 - Co..., DataMentor: View O..., and DataMentorInstruct... The system clock shows 8:16 PM.





DataMentor: View One Question - Windows Internet Explorer

http://www.datamentor.org/index.cfm?event=showOneQuestion&standardID=p20051600&questionID=11052&as

DataMentor: View One Question

Question

ELA2005 >>

Perform:

Identify a conclusion that summarizes the main idea

An Examination of How Geographical Settlements Led to an Economic System by Julie Bishop for Grade 4

http://accelerateu.org/resources/LEOs/Print_LEO.cfm?LEO_ID=2317

From NYSE

Resource: C

6. 4RS1Y

What could t

A. Mos

B. Mos

C. Co

D. Co

Microsoft Powe... 2.2 ELA Grade 4 ... DataMentor: Vie... LEOs - Windows... Untitled - Notep... 8:25 PM

2.2 ELA Grade 4 - Cognos Viewer - Windows Internet Explorer

http://166.109.4.114/cognos8/cgi-bin/cognos.cgi?b_action=cognosViewer&ui.action=run&ui.object=storeID(%22

2.2 ELA Grade 4 - Cognos Viewer

Cognos Viewer - 2.2 ELA Grade 4

District Name District

Building Name: SCHOOL (Total Number of Students: 133)

Standard	Performance Indicator (Short Description)	Question	Success Rate	Regional Success Rate	Regional HLVL2 CUTPT	Regional LVL3 CUTPT	Regional HLVL3 CUTPT	Regional LVL4 CUTPT
1. Information/Understanding	ELA Learning Standard 1 Collect and interpret data, facts, and ideas from unfamiliar texts	SPI1	80.53%	83.25%	58.99%	71.98%	86.05%	95.31%
		MC02	98.50%	95.17%	86.34%	91.50%	98.01%	99.43%
		MC04	48.12%	57.53%	30.05%	41.26%	57.17%	79.77%
	Identify a conclusion that summarizes the main idea	MC17	81.95%	85.28%	47.80%	70.63%	90.31%	98.51%
		MC06	62.41%	75.95%	50.55%	64.32%	76.47%	89.49%
		MC18	80.45%	87.30%	50.55%	73.54%	91.54%	99.20%
		MC01	83.46%	81.01%	61.75%	73.48%	83.43%	90.97%
	Identify a main idea and supporting details in informational texts	MC03	90.98%	91.87%	78.14%	84.18%	94.28%	98.97%
		MC13	83.40%	87.04%	54.10%	80.83%	92.29%	99.20%
	Understand written directions and procedures	MC14	92.48%	91.26%	70.49%	81.96%	95.53%	98.40%
MC15		99.25%	94.59%	84.07%	87.56%	96.68%	99.89%	
MC16		66.92%	68.82%	38.80%	48.18%	68.55%	89.71%	
2. Lit Response & Expression	ELA Learning Standard 2 Determine the meaning of unfamiliar words by using context clues, dictionaries, and other	SPI2	72.44%	76.64%	49.38%	60.29%	77.00%	94.94%
		MC21	87.22%	93.47%	80.66%	91.00%	96.35%	99.43%

Top Page up Page down Bottom

Internet | Protected Mode: On 100%

Microsoft Powe... 2.2 ELA Grade 4 - Co... Untitled - Notepad 8:27 PM

2008-09 School Year - IBM Cognos Connection - Windows Internet Explorer

http://166.109.4.114/cognos8/cgi-bin/cognos.cgi?b_action=xts.run&m=portal/cc.xts&cpstarget=FAAAAIWU8GZB

IBM Cognos Connection NEW ROCHELLE Log Off

2008-09 School Year 2007-08 School Year Archive Verification Reports EETI Documentation My Folders

Place your mouse over the yellow folder to view a description of the reports

ELA Grade 3-8 > 2. Building Benchmark (Curriculum) Analysis

- 2.1 ELA Grade 3
- 2.2 ELA Grade 4
- 2.3 ELA Grade 5
- 2.4 ELA Grade 6
- 2.5 ELA Grade 7
- 2.6 ELA Grade 8

Math Grade 3-8

- 1. Group/Sub-group (Demographic) Analysis
- 2. Building Benchmark (Curriculum) Analysis
- 3. Student Benchmark (Strength and Weakness) Analysis
- 4. Error/Distracter (Assessment) Analysis
- 5. Change Over Time (Trend) Analysis
- 6. Data Download

Science Grade 4 and 8

- 1. Group/Sub-group (Demographic) Analysis
- 2. Building Benchmark (Curriculum) Analysis
- 3. Student Benchmark (Strength and Weakness) Analysis
- 4. Error/Distracter (Assessment) Analysis
- 5. Change Over Time (Trend) Analysis
- 6. Data Download

Social Studies Grade 5 and 8

- 1. Group/Sub-group (Demographic) Analysis
- 2. Building Benchmark (Curriculum) Analysis
- 3. Student Benchmark (Strength and Weakness) Analysis
- 4. Error/Distracter (Assessment) Analysis
- 5. Change Over Time (Trend) Analysis
- 6. Data Download

Regents

- 2. Building Benchmark (Curriculum) Analysis

Multi-Subject

- 1. Student Profile

NYSESLAT

- NYSESLAT Individual Sessions Scores

Done Internet | Protected Mode: On 100%

Microsoft PowerPoi... 2008-09 School Year... Untitled - Notepad 8:28 PM

My Folders - IBM Cognos Connection - Windows Internet Explorer

http://166.109.4.114/cognos8/cgi-bin/cognos.cgi?b_action=xts.run&m=portal/cc.xts&m_tab=IDF8FA494459348C9

IBM Cognos Connection Log Off

2008-09 School Year 2007-08 School Year Archive Verification Reports EETI Documentation My Folders

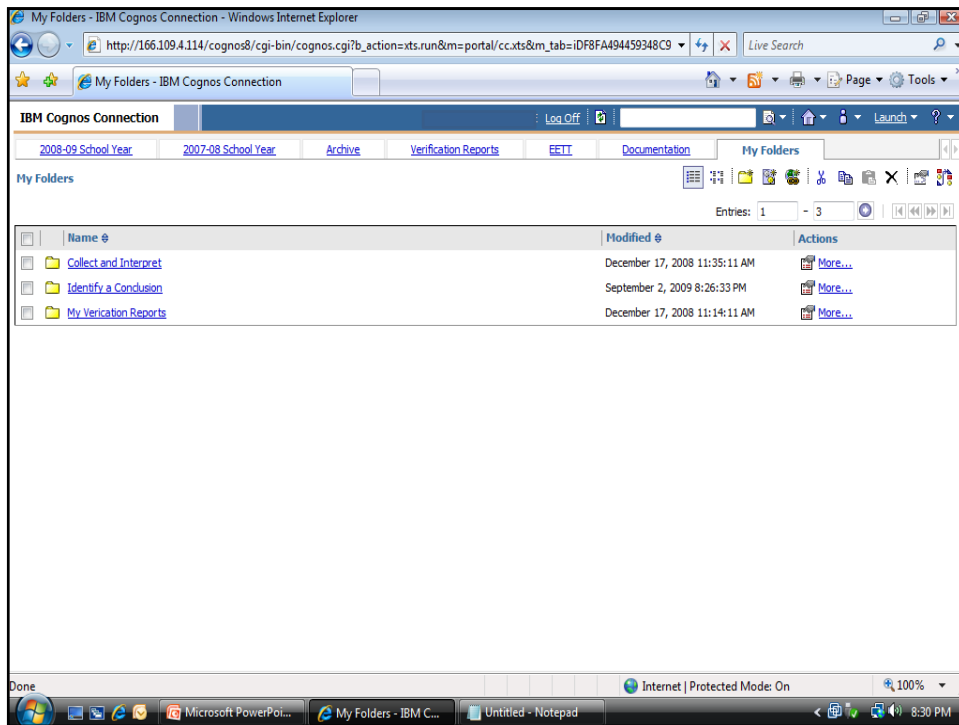
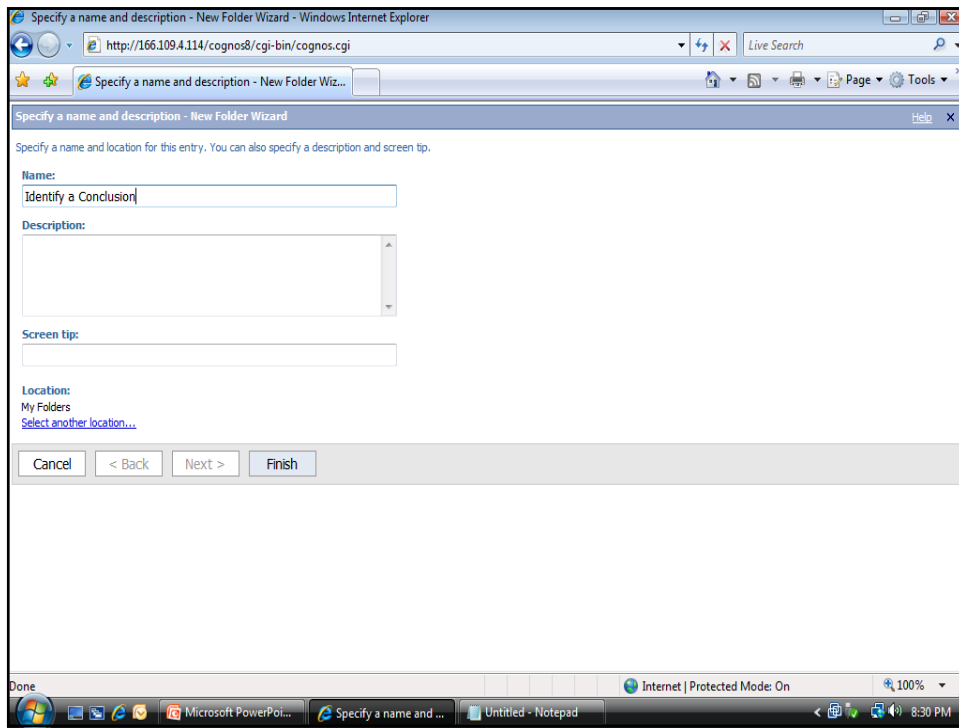
My Folders

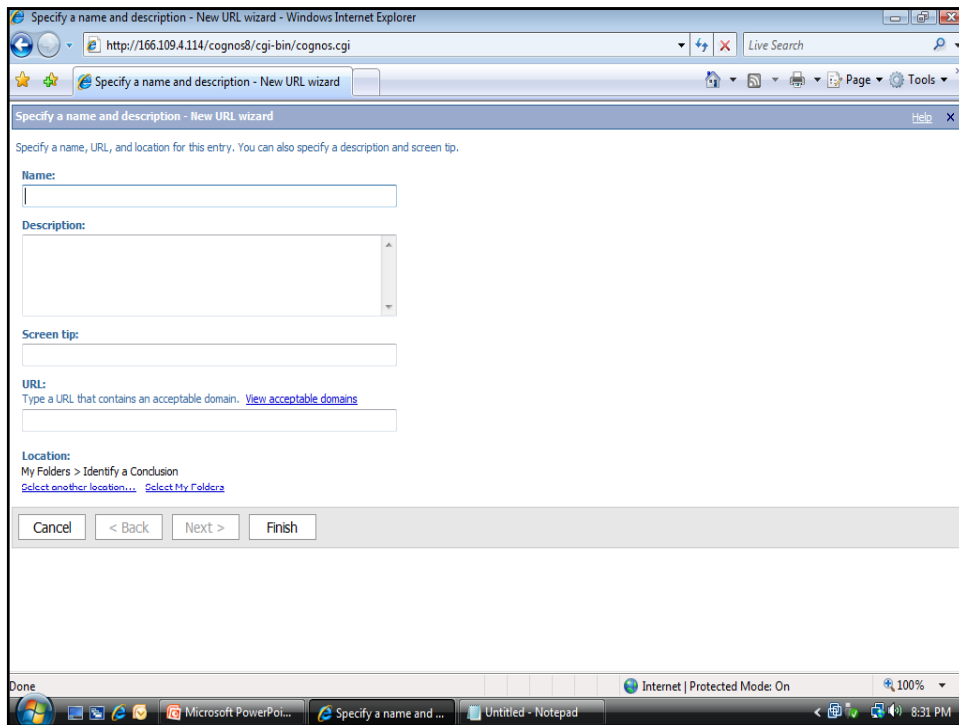
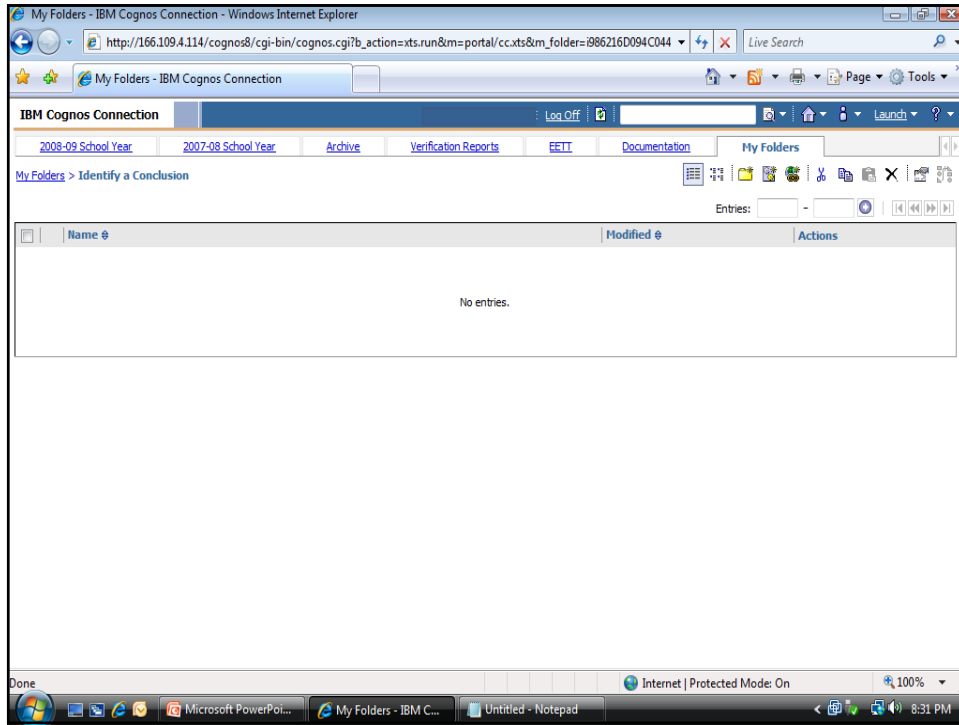
Entries: New Folder

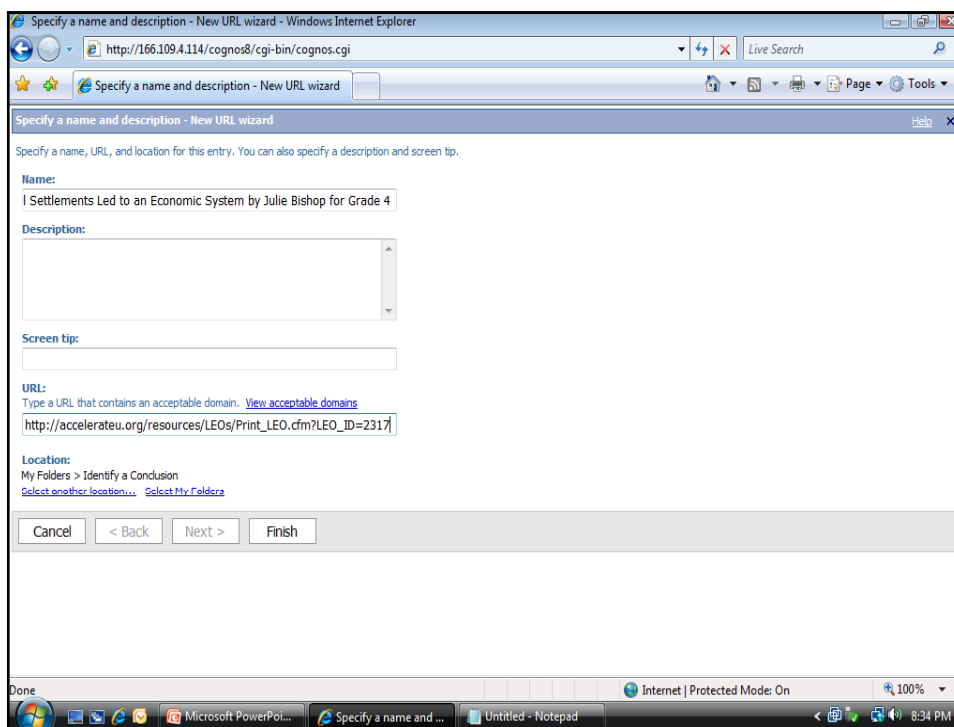
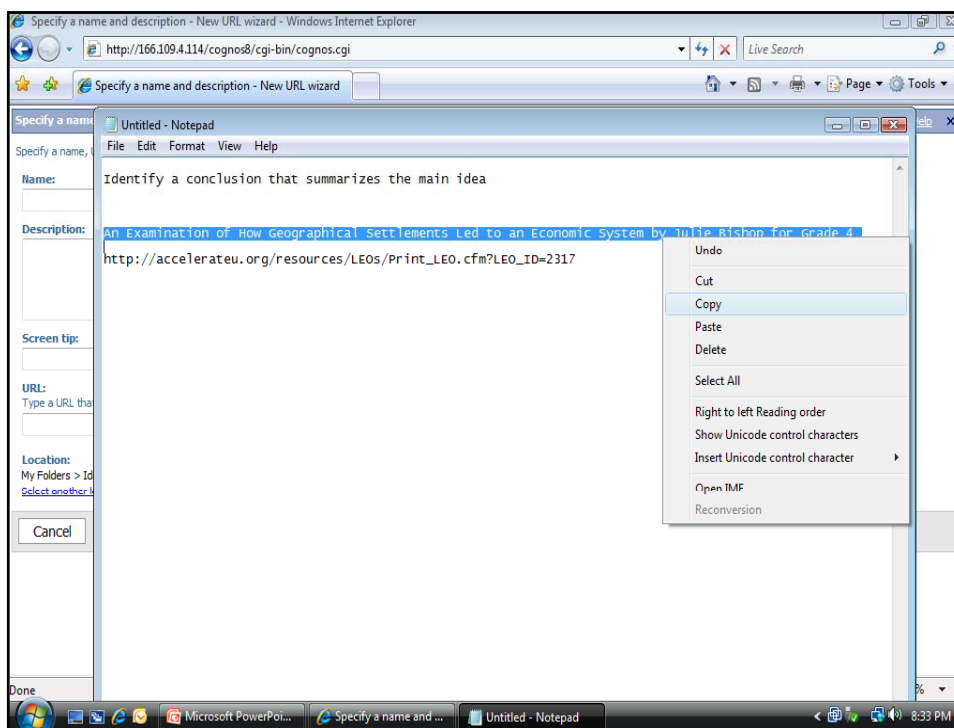
Name	Modified	Actions
Collect and Interpret	December 17, 2008 11:35:11 AM	More...
My Verification Reports	December 17, 2008 11:14:11 AM	More...

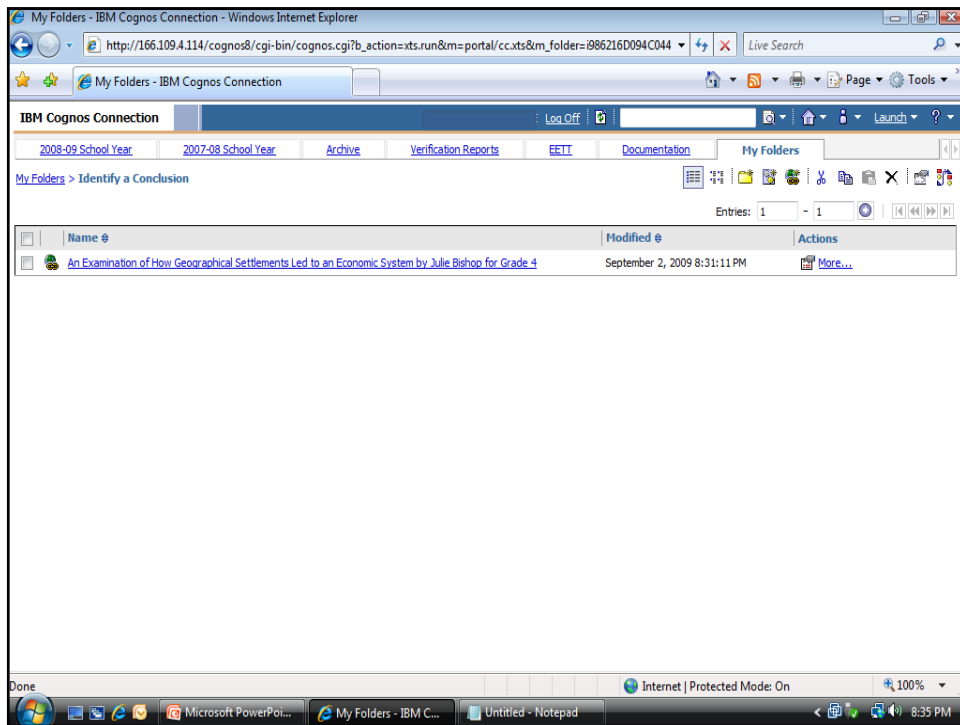
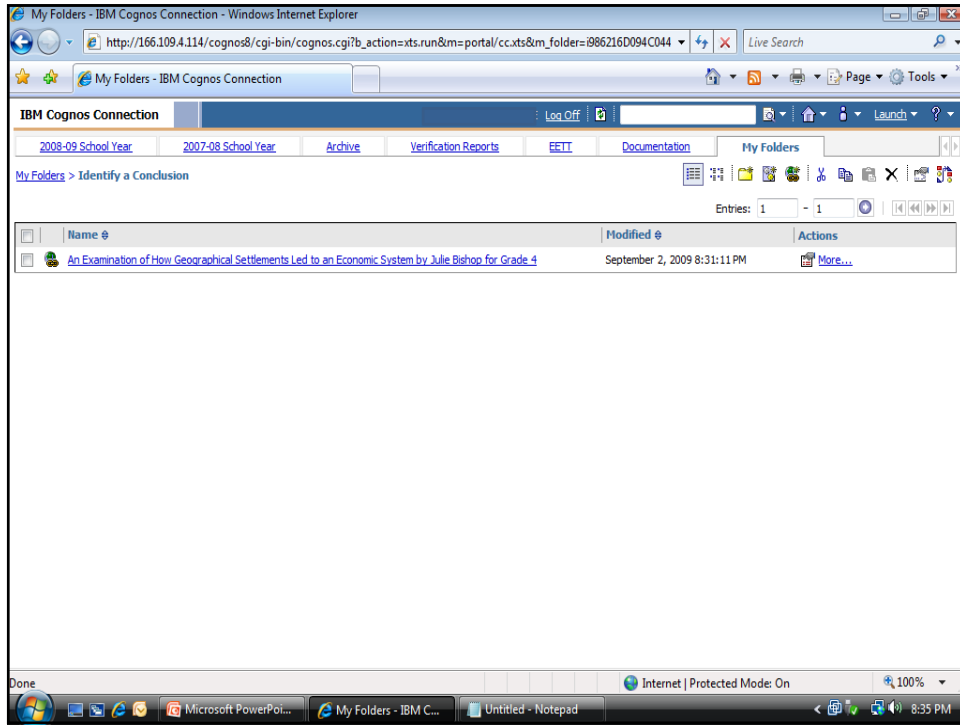
javascript:doNew('folder') Internet | Protected Mode: On 100%

Microsoft PowerPoi... My Folders - IBM C... Untitled - Notepad 8:28 PM









LEOs - Windows Internet Explorer
http://accelerateu.org/resources/LEOs/Print_LEO.cfm?LEO_ID=2317

AccelerateU
K-12 Education in New York State
2004 Winner
Create an Account | Login
September 2, 2009

Professional Development Resources K-12 Student About Us Help

[Print Version](#)
(this will remove all of the AccelerateU imagery and text).

Title: A Lesson: An Examination of How Geographical Settlements Led to an Economic System by Julie Bishop for Grade 4
Unit:
Topic: Geographic/Economics of 13 Colonies
Standard Level: Elementary
Grade: Grade 4
Start - End Date: There is no start - end date specified
This LEO was created by: Peggy Schlueter
Connected Rubric:
Learning Context:
Using a map of the original 13 colonies, the student will investigate and justify the geographic

Done
Microsoft PowerPoi... LEOs - Windows Int... Untitled - Notepad
Internet | Protected Mode: On 100% 8:36 PM

My Folders - IBM Cognos Connection - Windows Internet Explorer
http://166.109.4.114/cognos8/cgi-bin/cognos.cgi?b_action=xts.run&m=portal/cc.xts&m_folder=086216D094C044

IBM Cognos Connection
2008-09 School Year 2007-08 School Year Archive Verification Reports EETI Documentation My Folders

My Folders > Identify a Conclusion

Name	Modified	Actions
An Examination of How Geographical Settlements Led to an Economic System by Julie Bishop for Grade 4	September 2, 2009 8:31:11 PM	More...

Done
Microsoft PowerPoi... My Folders - IBM C... Untitled - Notepad
Internet | Protected Mode: On 100% 8:36 PM